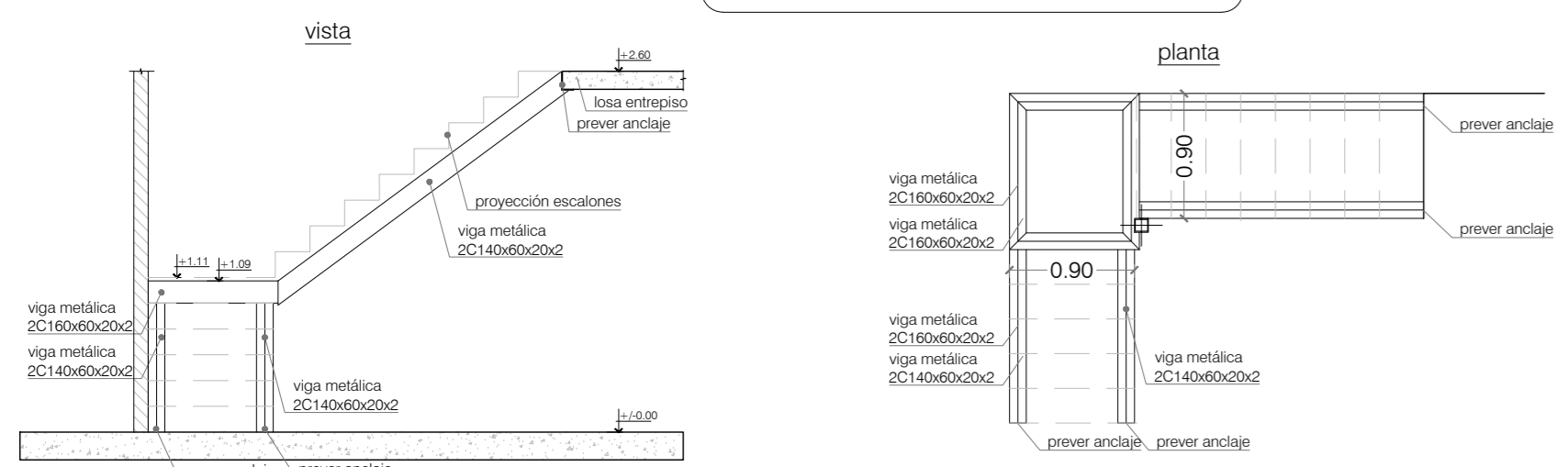
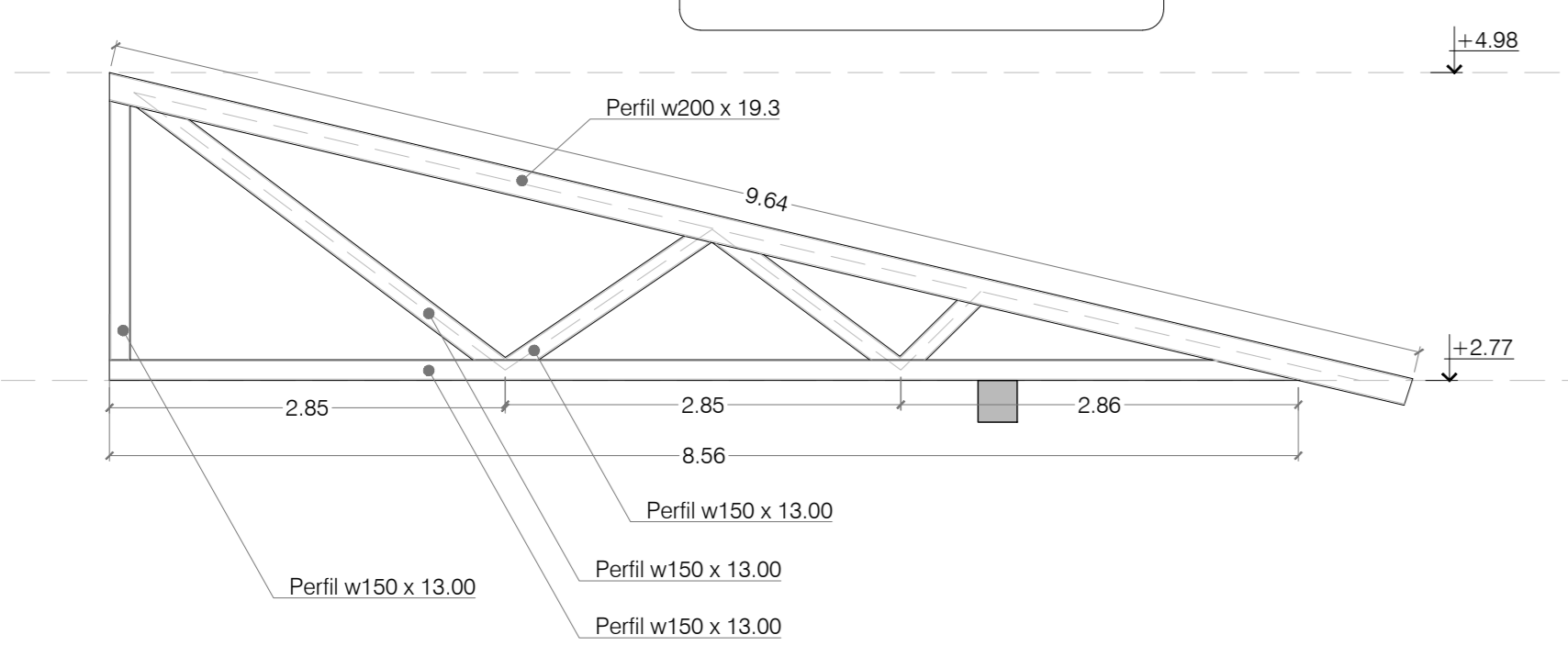


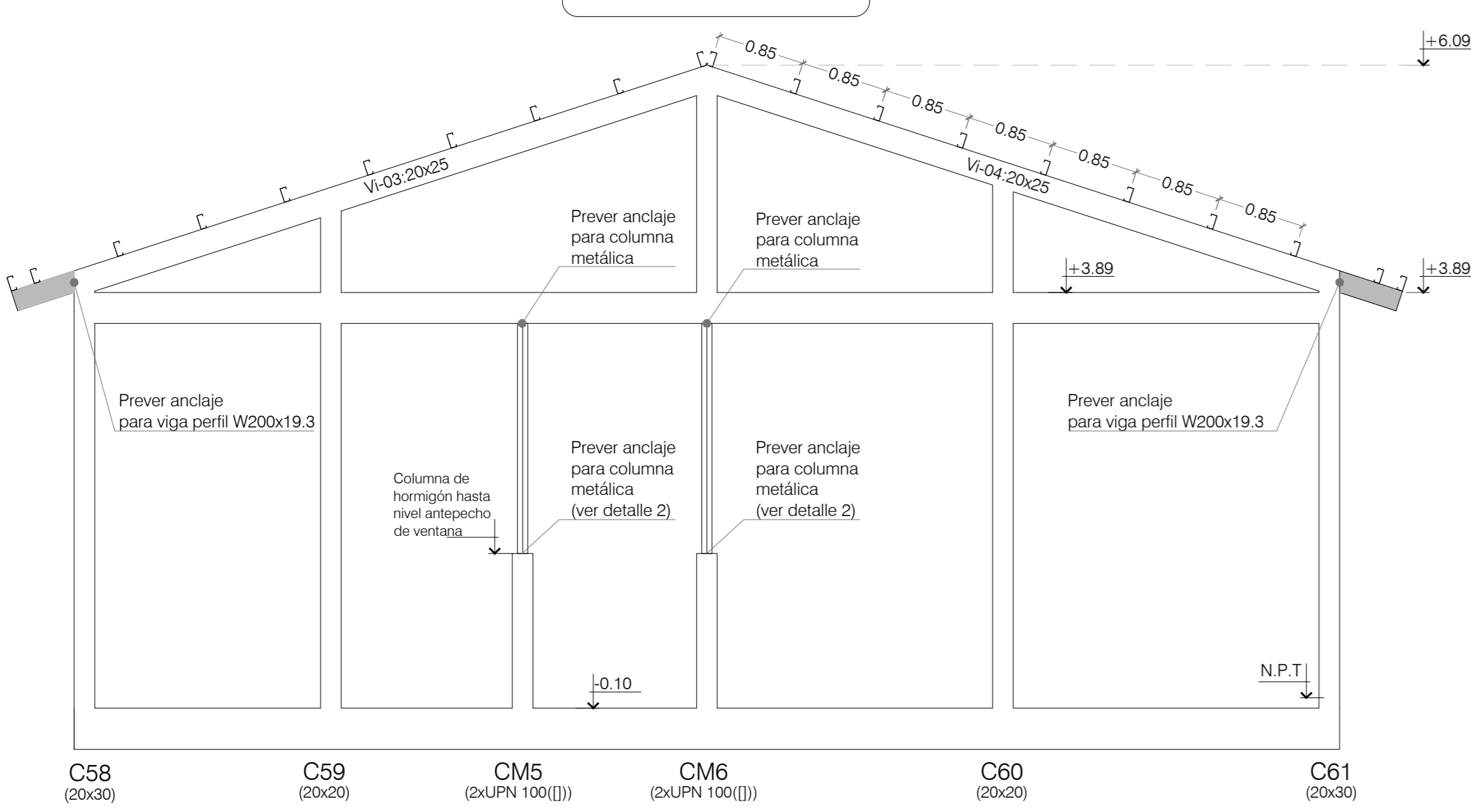
ESTRUCURA ESCALERA
ESC.: 1:50



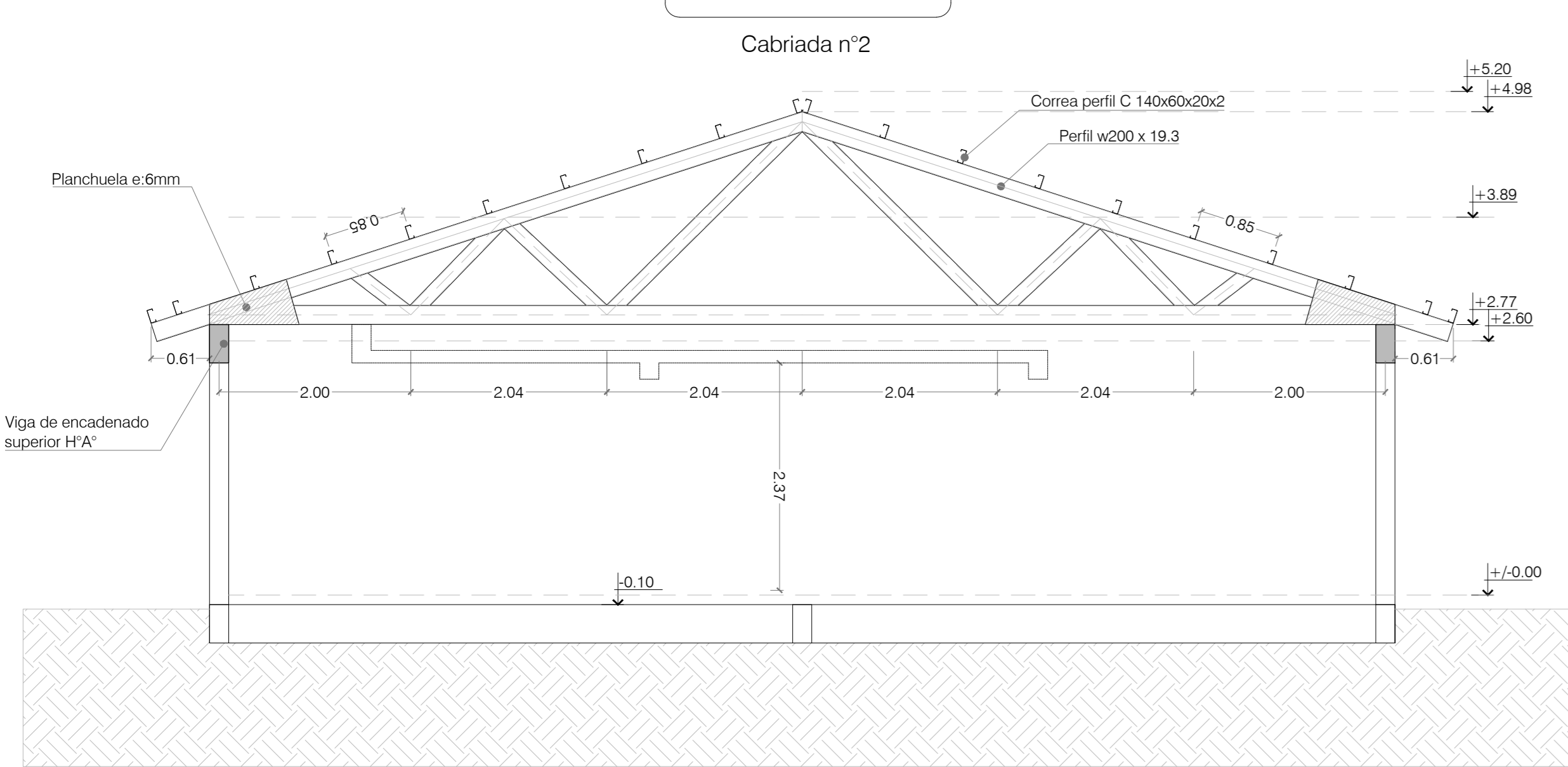
DETALLE CABIADA 4
ESC.: 1:50



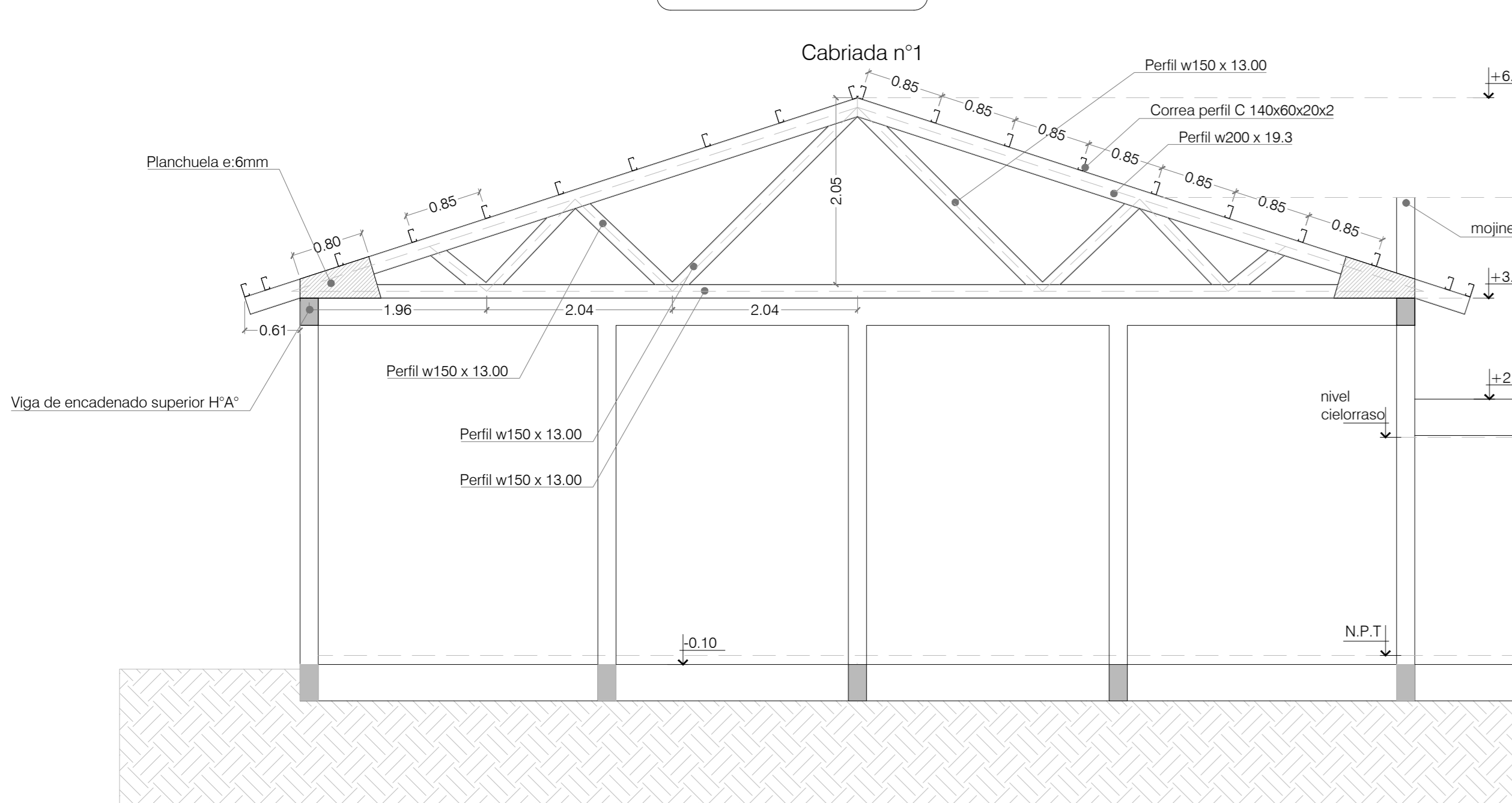
VISTA
ESC.: 1:50



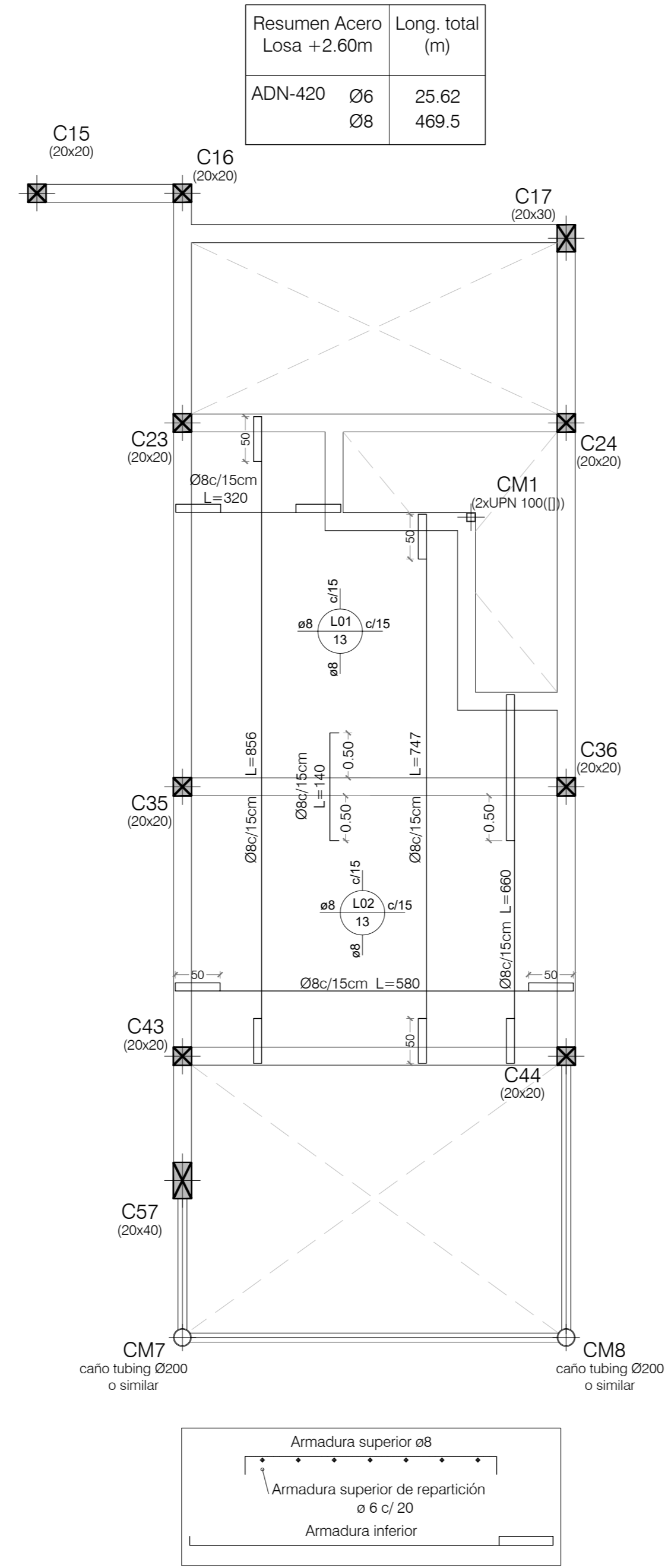
CORTE B-B
ESC.: 1:50



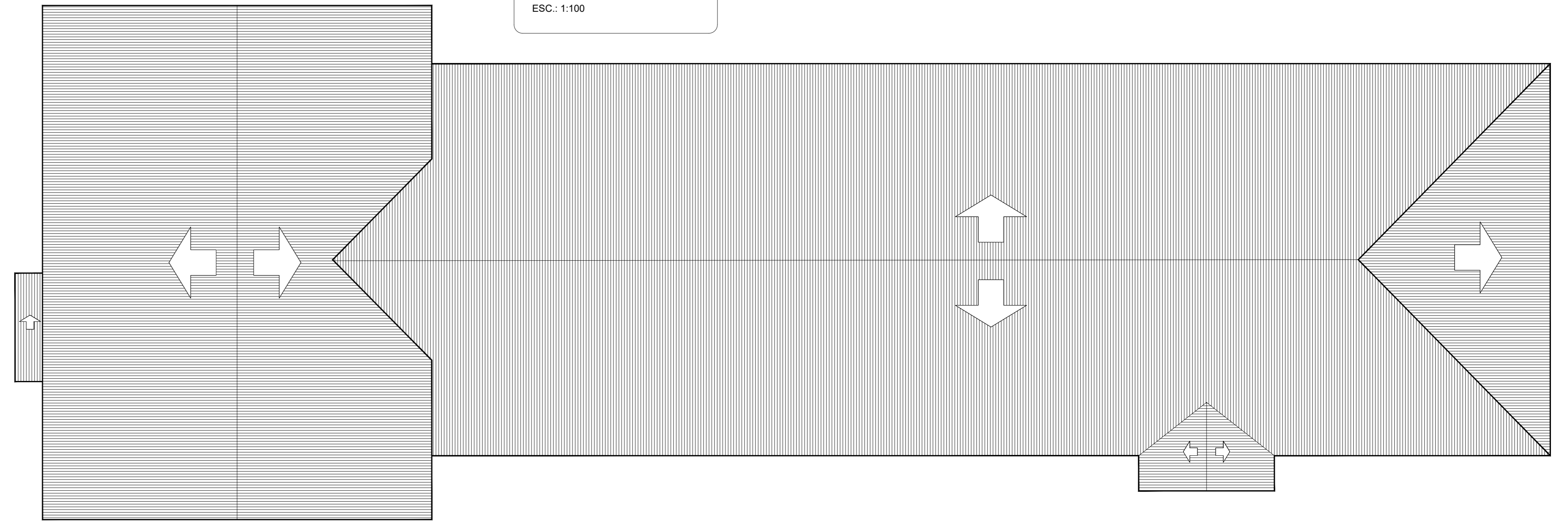
CORTE A-A
ESC.: 1:50



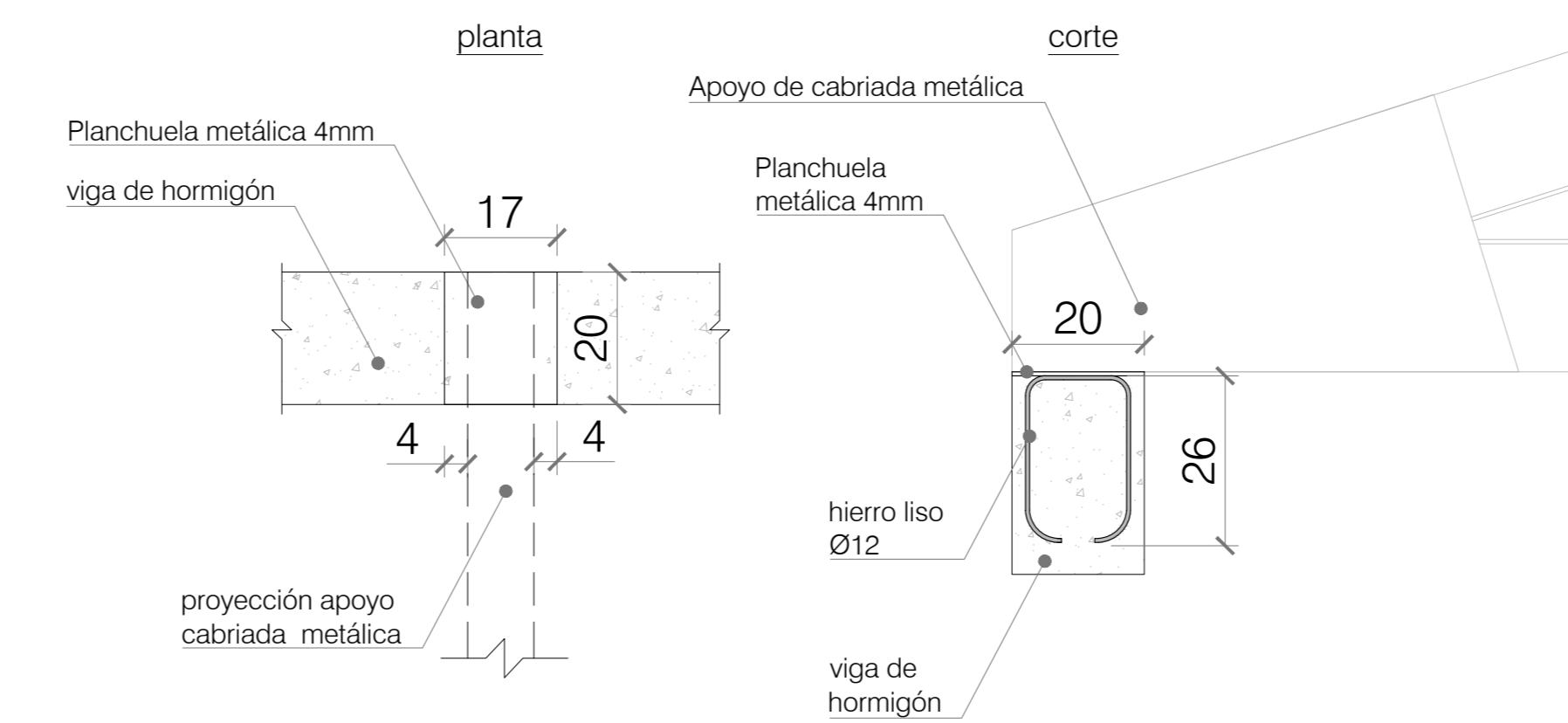
ARMADURA: SOBRE PLANTA BAJA
ESC.: 1:50



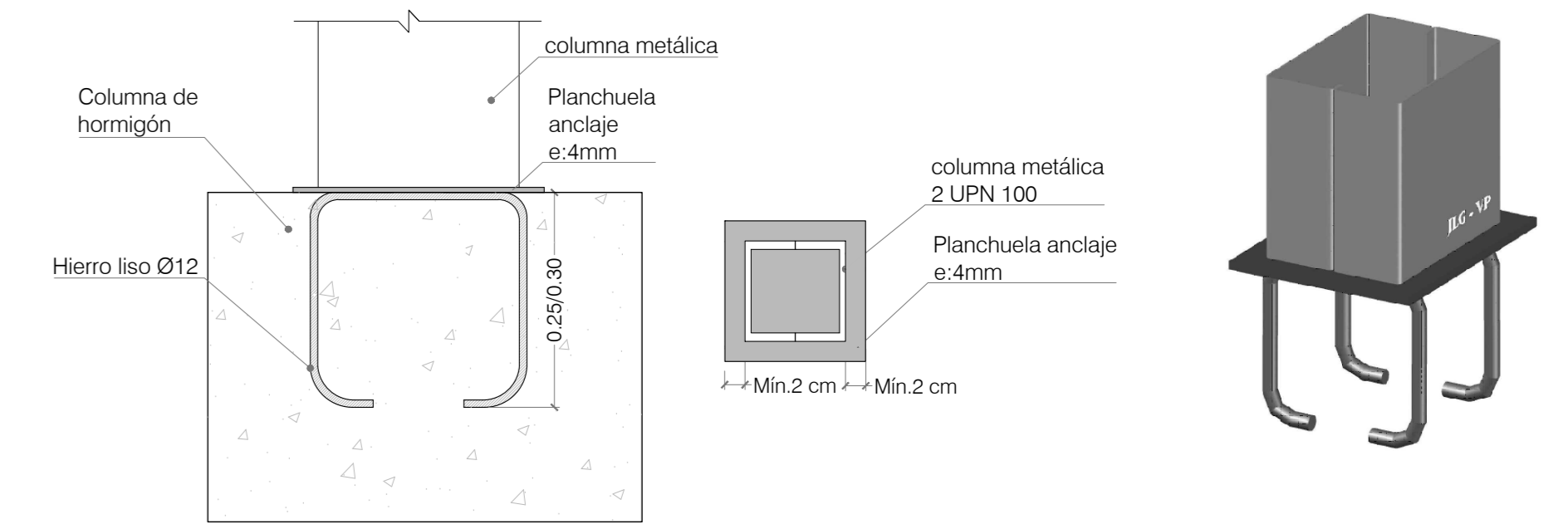
PLANTA DE TECHOS
ESC.: 1:100



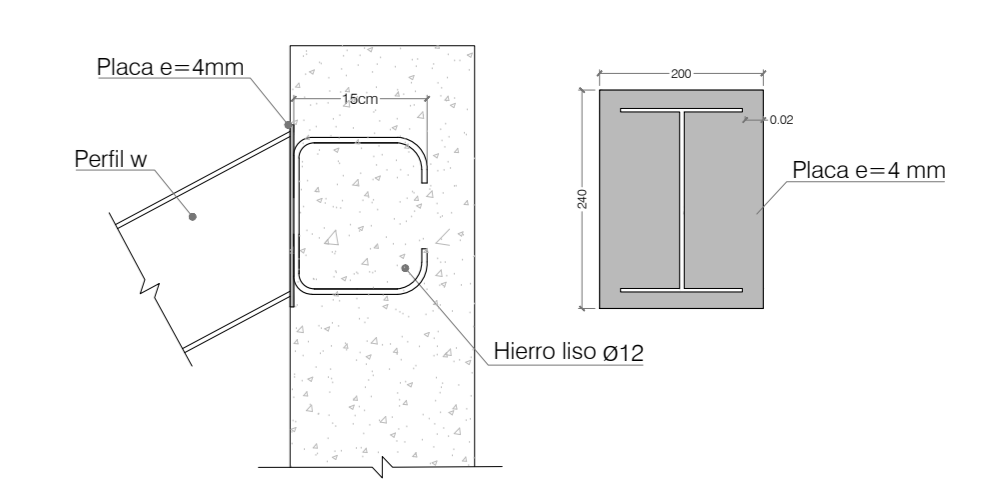
DETALLE 1: ANLAJE DE CABIADAS
S/ESC.



DETALLE 2: ANLAJE DE COLUMNAS METÁLICAS
S/ESC.



DETALLE 3: ANLAJE PERFIL W A COLUMNA H°A°
S/ESC.



PLANILLA DE COLUMNAS
ESC.: 1:50

| C1=C5 C25 C31 C58 C61 | C29 | C8=C9 C10=C11=C12= C13 C15=C16= C18=C19= C23=C24=C30=C35= C36=C37= C42=C44=C45=C46 C50=C51 C52= C53=C54=C55=C56 | C6=C21= C26 C27=C28 C32=C33 C38=C41 C49 | C02 C03 C04 C59 C60 | C7 | C14 C24 C43= C48 | C17 | C20= C57 | C26= C28 C32= C33 | C30 C42 | C22= C34 C39 | C37 | C40 | CM1 CM4 CM5 | CM6 | CM2 CM3 CM7 CM8 | T1=T2= T7 T8=T9 T10=T11 T12 | T3=T4 T5=T6 |
|-----------------------------------|-----|---|--|---------------------------------|----|---------------------------|-----|-------------|----------------------------|------------|--------------------|-----|-----|-------------------|-----|--------------------------|---|----------------|
| | | | | | | | | | | | | | | | | | | |

Cuadro de columnas
Hormigón: H-21
Acero: ADN-420
Acero en perfiles: ASTM A 36 36 ksi
Escala: 1:100

Medición de perfiles
Acero: ASTM A 36 36 ksi

| Tipo | Long. (m) | Peso (kg) |
|--------------|-----------|-----------|
| 2xUPN 100(I) | 20.80 | 441 |

| Resumen Acero | Long. total (m) | Peso +10% (kg) | Total |
|---------------|-----------------|----------------|-------|
| Columnas | | | |
| ADN-420 Ø6 | 1970.6 | 481 | |
| Ø8 | 59.5 | 26 | |
| Ø12 | 352.2 | 344 | |
| Ø16 | 1363.4 | 2367 | 3218 |

mojinete
S/PB +3.89m
S/PB +2.77m
VF +/-0.00m
Fundación